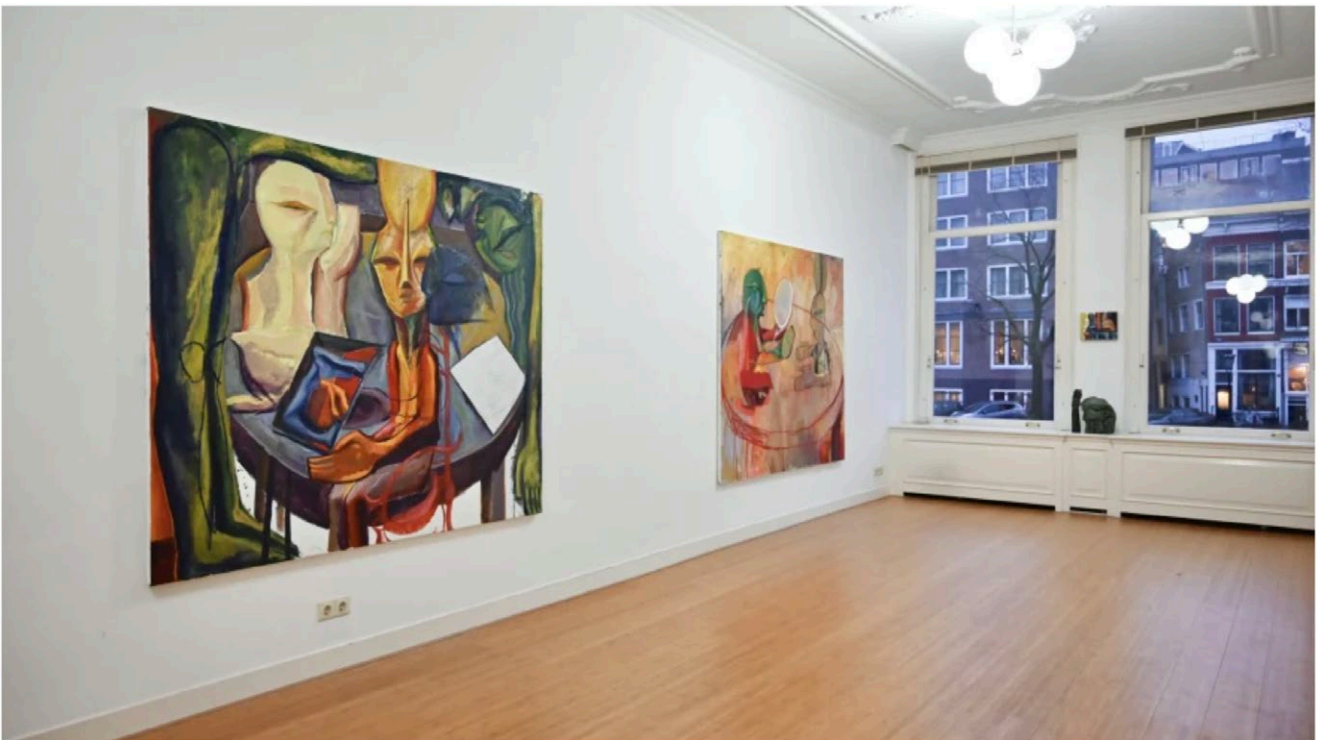


**Gallery  
viewer****Tincuta Marin: somewhere between dream  
and reality**

23 february 2024

Flor Linckens



Purring Figure, Ellen de Bruijne Projects

Until 16 March, Ellen de Bruijne Projects in Amsterdam is displaying a solo exhibition by the Romanian artist Tincuta Marin. In 'Purring Figure', she immerses us in a mysterious world that is inhabited by beings that may possess anthropomorphic features, but are decidedly not human.

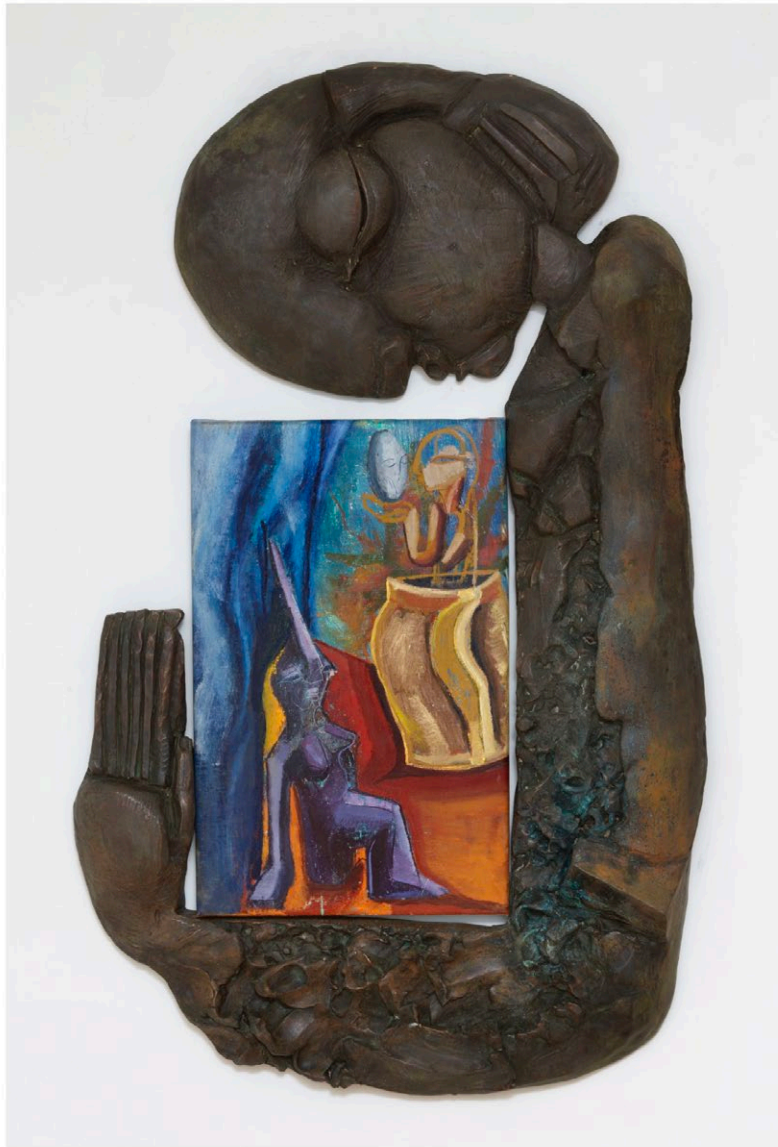
Marin is a masterful storyteller, crafting her characters from the rich tapestry of her imagination, nourished by Romanian folklore, ancient civilizations, mythical figures like Bigfoot and elements from art history, including the works of Matisse and Rembrandt, as well as Egyptian art. Yet her enigmatic entities do not serve as explicit allegories. In an interview with Les Nouveaux Riches, Marin stated, "This whole world of monsters and funny creatures simply comes to me. It's the fight of good against evil, like in our daily lives. I paint every day. I sometimes paint dreams, or fragments of dreams."



*Tincuta Marin, Tincuta Marin, 2023, Ellen de Bruijne Projects*

Marin's associative work is characterised by a syncretic approach, in which she seamlessly blends various belief systems, cultural elements and artistic styles into something entirely new. Consequently, her artworks are rich in meaning and evoke a range of interpretations and associations among viewers.

The dreamlike and timeless works possess a stylistic resemblance to still lifes. In some instances, they display an abstract background that seems to serve more as a suggestion. She employs a palette of deep and often warm colours. Noteworthy is the piece "Tincuta Marin" (2023), named after the artist, in which two figures are placed around the silhouette of a table. The painting provides only a minimal indication of space or surroundings, drawing the focus to the two non-human figures in the foreground. One appears to be reading or studying something, while the other seems focused on a mirror or object. Does this work ponder self-reflection, negotiation or an internal struggle?



*Tincuta Marin, Untitled, 2024, Ellen de Bruijne Projects*

Occasionally, Marin combines her paintings with clay tablets or sculptures encased in bronze. One of the untitled works is framed by a resting bronze figure, reinforcing the dreamlike essence of her work. The contrast between two- and three-dimensionality may allude to the dichotomy between a two-dimensional dream world and a three-dimensional reality. Or does the bronze character symbolise a guardian or protector of the figures depicted on the canvas?

For some artworks, the artist actualises elements from the image. Depicted vases, sculptures and figures are then handcrafted, so that they exist not only within the painting but also as tangible objects in reality — effectively blurring the lines between fiction and reality once again.



*Tincuta Marin, Nut the Goddess of the Sky II, 2024, Ellen de Bruijne Projects*

Marin was born in 1995 and lives and works in Romania. She completed her Master's degree in painting at the University of Art and Design in Cluj-Napoca, and her work has been featured in solo exhibitions at CFHILL Stockholm and the National Museum of Art in Cluj-Napoca, among others.

[Source](#)