



Painterly Affinities: Cornel Brudașcu and Alin Bozbiciu

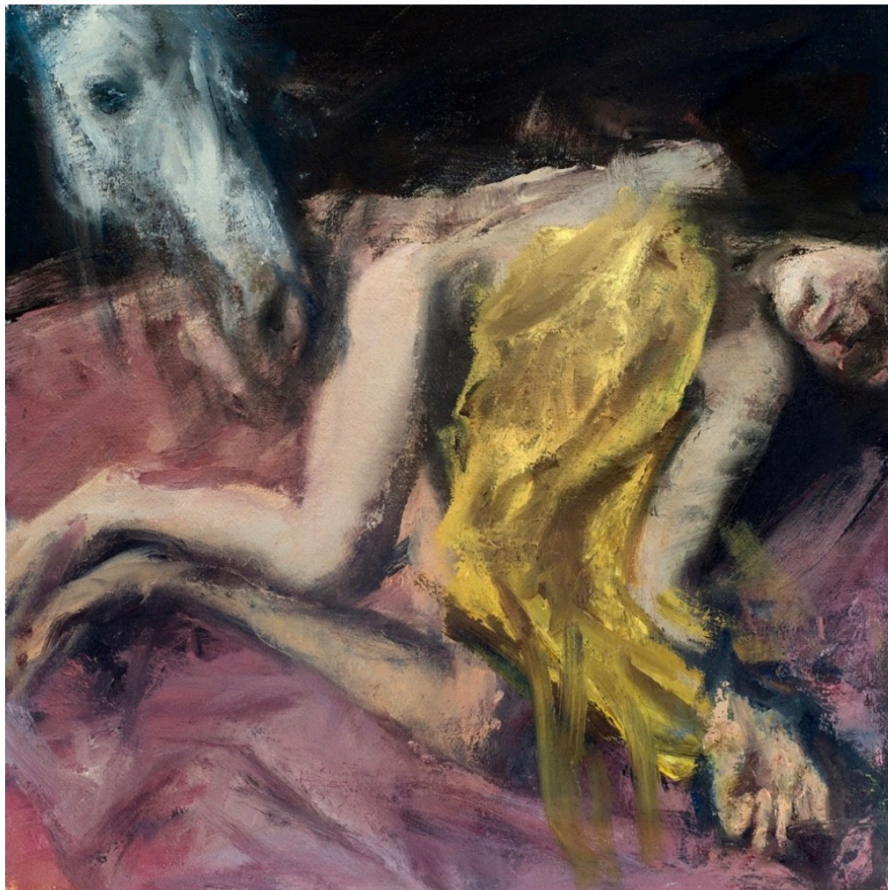
December 2022
By Elena Clavarino

The Arts Intel Report

A CULTURAL COMPASS
FOR THE WORLD TRAVELER

ART

Painterly Affinities: Cornel Brudașcu and Alin Bozbiciu



Cornel Brudașcu, *Lying Figure with Horse*, 2020.

The painter Cornel Brudașcu, born in 1937, studied in the small Romanian city of Cluj, graduating in 1962. It was then that he became a mentor to an arts movement known as the Cluj School, composed of young figurative painters. Brudașcu painted figuratively for a while, but in the 1970s he familiarized himself with American art. He started his own Pop art series, depicting the Western icons he spotted in magazines. Alin Bozbiciu, born in 1989, joined the Cluj School as a young adult and became known for his soft, wide brushstrokes and grisaille palette. By then, Brudașcu was once again exploring human form, taking inspiration from Old Masters. This exhibition places the two Romanian painters side by side.

—*Elena Clavarino*

Photo courtesy of the artist and European ArtEast Foundation

[Source](#)